



POWERFUL SOLUTIONS –  
PASSIONATE PEOPLE




**KALTENBACH**

## RANGE OF TOOLS

**Drilling machines**

KDE





## RANGE OF TOOLS DRILLING MACHINE KDE

Productivity and quality are always results of optimally coordinated machines and tools. Choose the original, high-tech tools of KALTENBACH and profit from highest precision, best finish quality and maximum drilling power.

This tool catalogue highlights the original KALTENBACH drill tools for the KDE drilling machines.

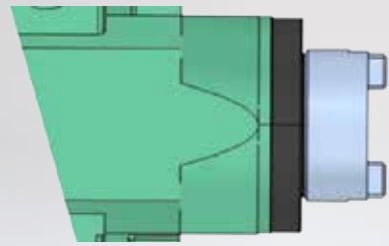
In addition to this there are further tool catalogues for our circular and band saws.

You can find more information on tools here:  
[www.kaltenbach.com](http://www.kaltenbach.com)

## CONTENT

▶ Toolkit KDE at a glance	4
▶ Toolkit for contour-marking	6
▶ Toolkit for HSS-drills and countersinks	8
▶ Toolkit for taps	12

# TOOLKIT KDE AT A GLANCE

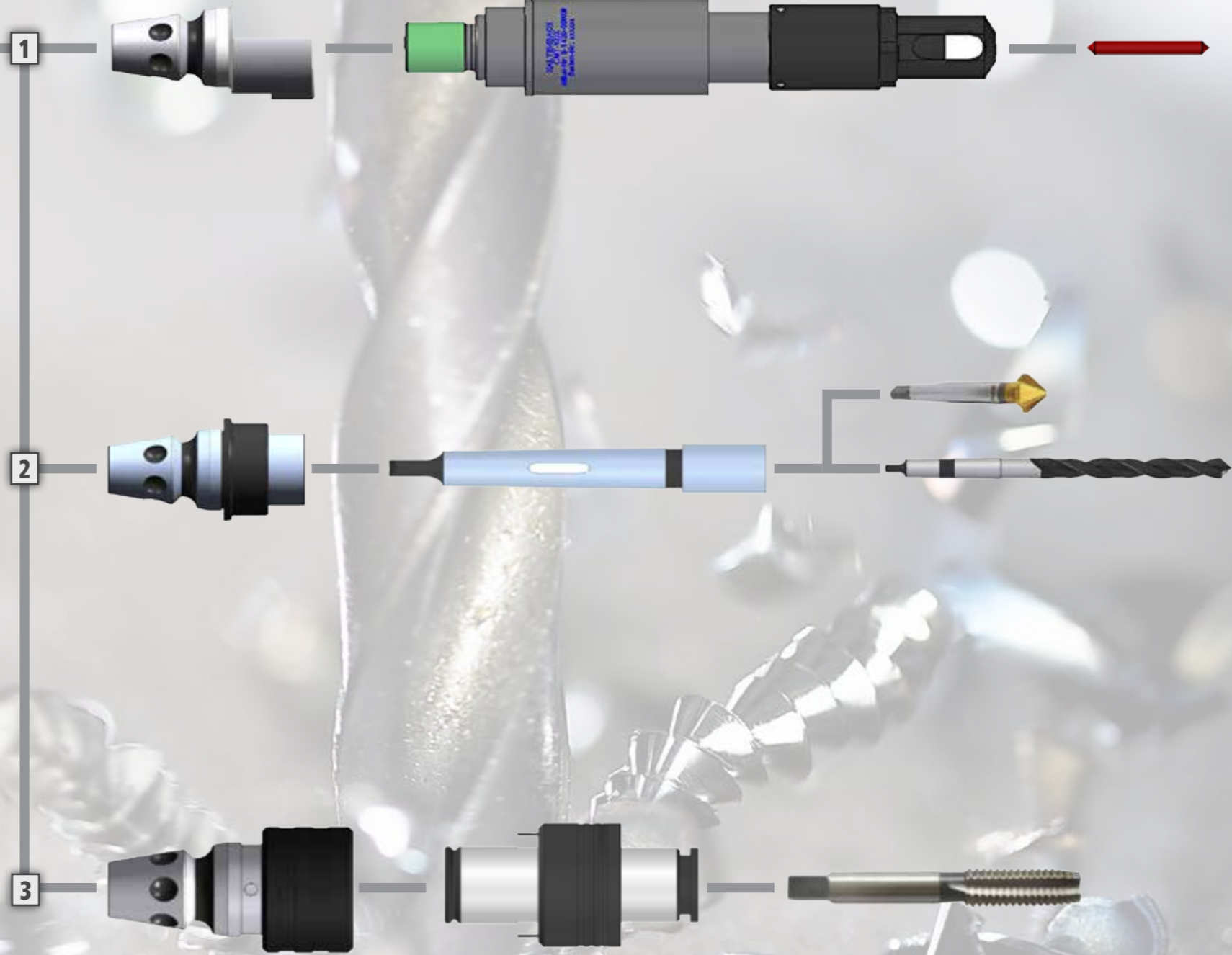


Drilling spindle end

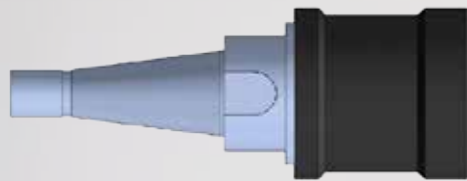
**1** CONTOUR MARKER

**2** HSS DRILL AND COUNTERSINK

**3** TAP



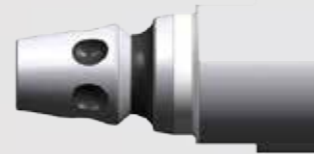
# CONTOUR-MARKING



**quick-change holder**

**order-no.**

8-9041-235000



**tool holder**

**order-no.**

4-7235-00100-01



**robot spindle**

**order-no.**

8-1420-000030



**tapping device VHM, D=8 90°**

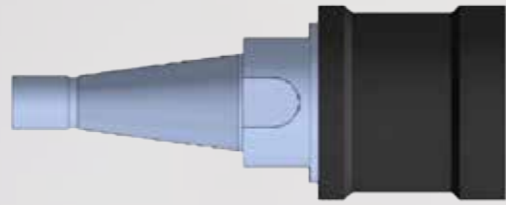
**order-no.**

8-9300-080002

accessories	SW	order-no.
wrench	36	7-0894-36000
	46	7-0894-46000
pin spanner	2.5	7-0911-025000

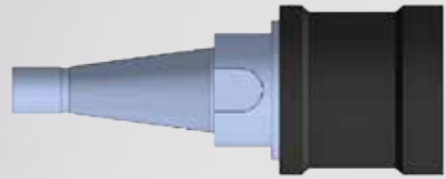
tools	order-no.
clamping collet	8-9041-050800
wrench DIN894 17	7-0894-170000
hook wrench	8-9050-000020

# HSS-DRILLS AND COUNTERSINKS



drill-Ø	quick-change holder order-no.	tool holder KK40 MK3 order-no.	reduction sleeve, KK=with cooling duct				HSS-drill, KK=with cooling duct				
			KK	MK	order-no.		Ø	KK	MK	SB	order-no.
11/16"			x	3 / 2	8-9041-123200	A	11/16" x 282	x	2	SB	8-9040-304451
13/16"							13/16" x 306	x	3	SB	8-9040-305251
15/16"							15/16" x 306	x	3	SB	8-9040-306051
6.8				3 / 1	8-9041-023100	A	6.8 x 174LG		1		8-9040-106850
8.0							8.0 x 181LG		1		8-9040-108050
8.5							8.5 x 181LG		1		8-9040-108550
9.0							9.0 x 188LG		1		8-9040-109050
10.0							10.0 x 233	x	2	SB	8-9040-310050
10.3	10.3 x 233	x	2	SB	8-9040-310350						
11.0	11.0 x 242	x	2	SB	8-9040-311050						
11.5	11.5 x 242	x	2	SB	8-9040-311550						
12.0	12.0 x 251	x	2	SB	8-9040-312050						
12.5	12.5 x 251	x	2	SB	8-9040-312550						
13.0	8-9041-215000	8-9041-240300	x	3 / 2	8-9041-123200	A	13.0 x 251	x	2	SB	8-9040-313050
14.0							14.0 x 259	x	2	SB	8-9040-314050
14.5							14.5 x 264	x	2	SB	8-9040-314550
15.0							15.0 x 264	x	2	SB	8-9040-315050
16.0							16.0 x 270	x	2	SB	8-9040-316050
17.0							17.0 x 244	x	2	SB	8-9040-317050
18.0							18.0 x 282	x	2	SB	8-9040-318050
18.5							18.5 x 307	x	3	SB	8-9040-318550
19.0							19.0 x 307	x	3	SB	8-9040-319050
20.0							20.0 x 313	x	3	SB	8-9040-320050
21.0	21.0 x 320	x	3	SB	8-9040-321050						
22.0	22.0 x 327	x	3	SB	8-9040-322050						
22.5	22.5 x 334	x	3	SB	8-9040-322550						
23.0	23.0 x 334	x	3	SB	8-9040-323050						
24.0	24.0 x 342	x	3	SB	8-9040-324050						
25.0	25.0 x 342	x	3	SB	8-9040-325050						
26.0	26.0 x 350	x	3	SB	8-9040-326050						
26.5	26.5 x 350	x	3	SB	8-9040-326550						
28.0	28.0 x 350	x	3	SB	8-9040-328052						
30.0	30.0 x 350	x	3	SB	8-9040-330052						

# HSS-COUNTERBORES



## quick-change holder K30 KK40

order-no.

8-9041-215000

## tool holder KK40 MK3

order-no.

8-9041-240300

## extension to reduce cone

MK	L	order-no.
3 / 2	254	8-9041-063225
3 / 3	215	8-9041-063321

## extension for counterbore

MK	L	order-no.
3 / 2	254	8-9041-063225
3 / 3	215	8-9041-063321

## accessories for morse taper

drill drift	MORSE	order-no.
1	1+2	W02679002
3	3	W02679003

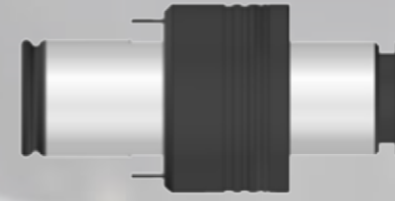
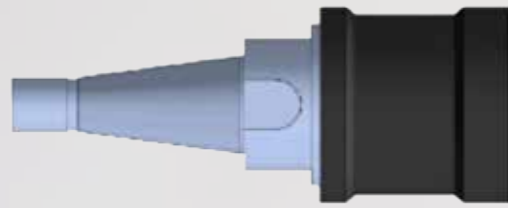
## HSS-countersink

Ø	angle	MK	order-no.
19	90°	2	8-9044-190200
30	90°	2	8-9044-300200
50	90°	3	8-9044-500300

## HSS-counterbores

Ø	HSS	MK	order-no.
15 x 9	HSS	2	8-9046-150920
18 x 11	HSS	2	8-9046-181120
20 x 13.5	HSS	2	8-9046-201320
24 x 15.5	HSS	2	8-9046-241520
26 x 17.5	HSS	3	8-9046-261730
30 x 20	HSS	3	8-9046-302030
33 x 22	HSS	3	8-9046-332230
36 x 24	HSS	3	8-9046-362430
40 x 26	HSS	3	8-9046-402630

# TAP



screw	tool holder order-no.	tapping chuck order-no.	BILZ-insert			tap	
			screw	type	order-no.	screw	order-no.
M8	8-9041-215000	8-9041-004202	M8	WESN2B-100	8-9041-040800	M8	8-9043-080000
M10			M10	WESN2B-100	8-9041-041000	M10	8-9043-100000
M12			M12	WESN2B-100	8-9041-041200	M12	8-9043-120000
M14			M14	WESN2B-100	8-9041-041400	M14	8-9043-140000
M16			M16	WESN2B-100	8-9041-041600	M16	8-9043-160000
M18			M18	WESN2B-100	8-9041-041800	M18	8-9043-180000
M20			M20	WESN2B-100	8-9041-042000	M20	8-9043-200000
M22			M22	WESN2B	8-9041-142200	M22	8-9043-220000
M24			M24	WESN2B	8-9041-142400	M24	8-9043-240000
M27			M27	WESK2B	8-9041-142710	M27	8-9043-270000
M30	M30	WESK2B	8-9041-143010	M30	8-9043-300000		

# ORIGINAL KALTENBACH TOOLS: APPLY AND PRODUCE

- ▶ SAW BLADES
- ▶ SAW BANDS
- ▶ DRILL TOOLS
- ▶ CUTTING TOOLS
- ▶ CUTTING TORCHES
- ▶ SHEAR UNIT

For further information and our foreign affiliates please visit:

**[WWW.KALTENBACH.COM](http://WWW.KALTENBACH.COM)**

Product videos:

**[WWW.YOUTUBE.COM/KALTENBACHGROUP](http://WWW.YOUTUBE.COM/KALTENBACHGROUP)**

Follow us on LinkedIn:

**[WWW.LINKEDIN.COM/COMPANY/KALTENBACH](http://WWW.LINKEDIN.COM/COMPANY/KALTENBACH)**



**KALTENBACH GMBH + CO. KG**

Blasiring 4

D-79539 Lörrach

phone: +49 7621/175 - 0

e-Mail: [info@kaltenbach.de](mailto:info@kaltenbach.de)

[www.kaltenbach.com](http://www.kaltenbach.com)