



POWERFUL SOLUTIONS –  
PASSIONATE PEOPLE




**KALTENBACH**

## **RANGE OF TOOLS**

**Drilling machines**

KDM



## RANGE OF TOOLS DRILLING MACHINE KDM

Productivity and quality are always results of optimally coordinated machines and tools. Choose the original, high-tech tools of KALTENBACH and profit from highest precision, best finish quality and maximum drilling power.

This tool catalogue highlights the original KALTENBACH drill tools for the KDM drilling machines.

In addition to this there are further tool catalogues for circular and band saws.

You can find more information on tools here:  
[www.kaltenbach.com](http://www.kaltenbach.com)

## CONTENT

▶ Toolkit KDM at a glance	4
▶ Toolkit for solid carbide drills	6
▶ Toolkit for CI-drills	8
▶ Toolkit for contour-marking	12
▶ Toolkit for HSS-drills and countersinks	14
▶ Toolkit for taps	20
▶ Toolkit for milling cutters	22

# TOOLKIT KDM AT A GLANCE



Drilling spindle end

**1 SOLID CARBIDE DRILLS**

1



2



**2 CI-DRILL**

3



**3 CONTOUR MARKER**

4



**4 HSS DRILL AND COUNTERSINK**

5



**5 HSS DRILL AND COUNTERSINK**

**6 TAP**

6



**7 MILLING CUTTER**

7

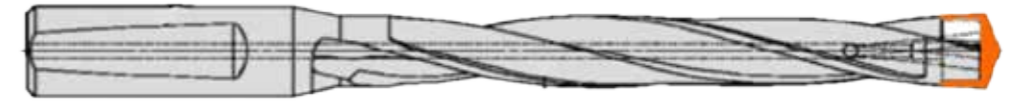
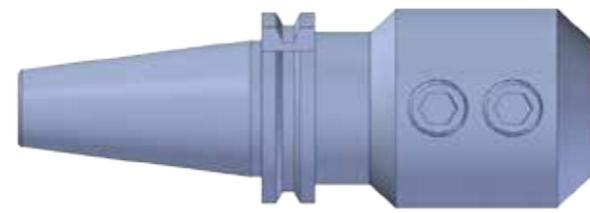


# SOLID CARBIDE DRILLS



drill-Ø	pull stud A19		tool holder				solid carbide drills; with cooling duct			
		order-no.	name	A	order-no.		Ø	L	form	order-no.
6.8	8-9041-131190		SK40-WN08	200	8-9041-102082	A	6.8	8 x Ø	HE	8-9300-068081
8.0			8.0	8 x Ø	HE	8-9300-080081				
8.5			8.5	8 x Ø	HE	8-9300-085081				
10.0			10.0	8 x Ø	HE	8-9300-100081				
10.2			10.2	8 x Ø	HE	8-9300-102081				
12.0			12.0	8 x Ø	HE	8-9300-120081				
13.0			13.0	5 x Ø	HE	8-9300-130051				
14.0			14.0	5 x Ø	HE	8-9300-140051				
15.0			15.0	5 x Ø	HE	8-9300-150051				
15.5			15.5	5 x Ø	HE	8-9300-155051				
16.0			16.0	5 x Ø	HE	8-9300-160051				
17.0			17.0	5 x Ø	HE	8-9300-170051				
17.5			17.5	5 x Ø	HE	8-9300-175051				
18.0			18.0	5 x Ø	HE	8-9300-180051				
19.0			19.0	5 x Ø	HE	8-9300-190051				
19.5			19.5	5 x Ø	HE	8-9300-195051				
20.0	20.0	5 x Ø	HE	8-9300-200051						
accessories		SW	set screw				pin spanner			
wrench	19	7-0894-19000	size	order-no.			SW	order-no.		
			M8 x 10 2x	7-0916-081000		A	4	7-0911-04000		
			M10 x 12	7-0916-101200		B	5	7-0911-05000		
			M12 x 16	7-0916-121600		C	6	7-0911-06000		
			M14 x 16 2x	7-0916-141600		D	8	7-0911-08000		
			M16 x 16 2x	7-0916-161600		E	8	7-0911-08000		

# CI-DRILLS



drill-Ø	pull stud A19 8-9041-131190	tool holder				drill body				cutting insert	
		name	A	order-no.		Ø	L	shaft	order-no.	Ø	order-no.
12.5	standard tools	SK-40-WN16	200	8-9041-102162	A	14.0	R5	WN16	8-9042-140050	14.0	8-9042-140000
14.0						R5	WN20	8-9042-145050	14.5	8-9042-145000	
14.5		SK40-WN20	200	8-9041-102202	B	16.0	R5	WN20	8-9042-160050	16.0	8-9042-160000
16.0						R5	WN20	8-9042-170050	17.0	8-9042-170000	
17.0						R5	WN20	8-9042-180050	18.0	8-9042-180000	
18.0						R5	WN25	8-9042-185050	18.5	8-9042-185000	
18.5		SK40-WN25	100	8-9041-102250	C	19.0	R5	WN25	8-9042-190050	19.0	8-9042-190000
19.0						R5	WN25	8-9042-200050	20.0	8-9042-200000	
20.0						R5	WN25	8-9042-210050	21.0	8-9042-210000	
21.0						R5	WN25	8-9042-220050	22.0	8-9042-220000	
22.0						R5	WN25	8-9042-230050	23.0	8-9042-230000	
23.0						R5	WN25	8-9042-240050	24.0	8-9042-240000	
24.0						R5	WN32	8-9042-250050	25.0	8-9042-250000	
25.0						R5	WN32	8-9042-260050	26.0	8-9042-260000	
26.0		SK40-WN32	100	8-9041-102320	D	26.5	R5	WN32	8-9042-265050	26.5	8-9042-265000
26.5						R5	WN32	8-9042-270050	27.0	8-9042-270000	
27.0	R5					WN32	8-9042-280050	28.0	8-9042-280000		
28.0	R5					WN32	8-9042-290050	29.0	8-9042-290000		
29.0	R5					WN32	8-9042-300050	30.0	8-9042-300000		
30.0	R5					WN32	8-9042-310050	31.0	8-9042-310000		
31.0	R5					WN32	8-9042-320050	32.0	8-9042-320000		
32.0	R5					WD50	8-9042-330050	33.0	8-9042-330000		
33.0	SK40-WD50	120	2-7935-002400-00	E	34.0	R5	WN32	8-9042-340050	34.0	8-9042-340000	
34.0					R5	WN32	8-9042-350050	35.0	8-9042-350000		
35.0					R5	WD50	8-9042-360050	36.0	8-9042-360000		
36.0					R5	WD50	8-9042-370050	37.0	8-9042-370000		
37.0					R5	WD50	8-9042-380050	38.0	8-9042-380000		
38.0					R3	WD50	8-9042-390030	39.0	8-9042-390000		
39.0					R3	WD50	8-9042-400030	40.0	8-9042-400000		
40.0					replacement tools with WN40	SK40-WN40	120	8-9041-102400	F	33.0	R5
34.0	R5	WN40	8-9042-340050	34.0						8-9042-340000	
35.0	R5	WN40	8-9042-350050	35.0						8-9042-350000	
36.0	R5	WN40	8-9042-360050	36.0						8-9042-360000	
37.0	R5	WN40	8-9042-370050	37.0						8-9042-370000	
38.0	R5	WN40	8-9042-380050	38.0						8-9042-380000	
39.0	R3	WN40	8-9042-390030	39.0						8-9042-390000	
40.0	R3	WN40	8-9042-400030	40.0						8-9042-400000	

accessories	SW	order-no.
wrench	19	7-0894-19000

accessories	size	order-no.	
set screw	M14 x 16	7-0916-141600	A
	M16 x 16	7-0916-161600	B
	M18 x 2 x 20 2x	7-0916-182030	C
	M20 x 2 x 20 2x	7-0916-202030	D
ball pressure screw	M12 x 16 x 2x	8-0043-121601	E
set screw	M20 x 2 x 25 2x	7-0916-202530	F
accessoires	SW	order-no.	
pin spanner	6	7-0911-06000	A; E
	8	7-0911-08000	B
	10	7-0911-10000	C; D; F

accessories for base body
set screw + pin spanner *



# CONTOUR-MARKING

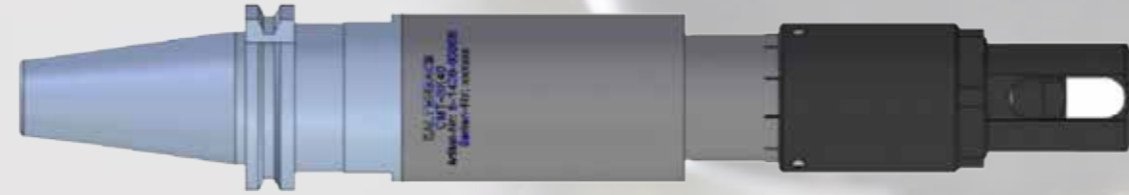


**pull stud - A19**

**order-no.**

8-9041-131190

accessories	SW	order-no.
wrench	19	7-0894-19000



**robot spindle CMT SK40**

**order-no.**

8-1420-000020

accessories	SW	order-no.
wrench	36	7-0894-36000
wrench	46	7-0894-46000
pin spanner	2.5	7-0911-025000



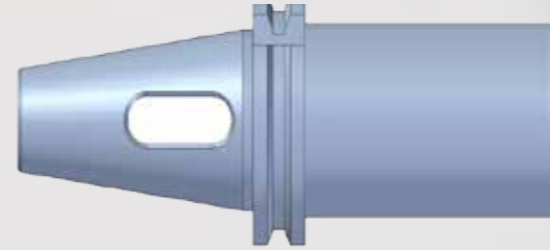
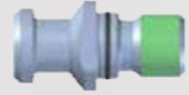
**tapping device VHM, D=8 90°**

**order-no.**

8-9300-080002

tool	order-no.
clamping collet	8-9041-050800
wrench 17	7-0894-170000
hook wrench	8-9050-000020

# HSS-DRILLS



**drill-  
Ø**

3.0  
3.5  
5.2  
6.0  
7.0  
10.0

**pull stud - A19**

**order-no.**

8-9041-131190

**accessories**

wrench

**SW**

19

**order-no.**

7-0894-19000

**tool holder**

**order-no.**

8-9041-101400

**accessories**

drill drift 4

**MORSE**

4

**order-no.**

W02679004

**reduction sleeve**

**order-no.**

8-9041-124200

**accessories**

morse taper

**order-no.**

W02679002

**drill chuck  
Ø1mm - Ø13mm**

**order-no.**

8-9041-400020

**HSS-drills**

**Ø**

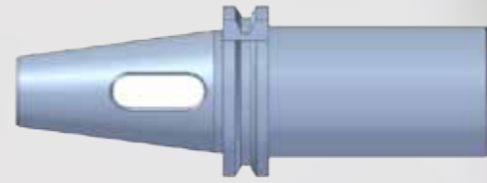
**order-no.**

3.0  
3.5  
5.2  
6.0  
7.0  
10.0

8-9303-030100  
8-9303-035100  
8-9303-052400  
8-9303-060100  
8-9303-070100  
8-9303-100400

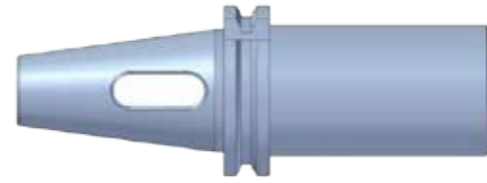


# HSS-COUNTERSINKS



counter-bores-Ø	pull stud - A19		tool holder			extension to countersink				HSS-countersink				
	order-no.		order-no.			name	MK	L	order-no.	Ø	angle	MK	order-no.	
19	8-9041-131190		8-9041-101400			drill extension	4 / 2	231	W03643156	A	19	90°	2	8-9044-190200
30						drill extension	4 / 3	227	W03643124		B	30	90°	2
50						drill extension	4 / 3	227	W03643124	50		90°	3	8-9044-500300
						extension to counterbores				HSS-counterbores				
						name	MK	L	order-no.			HSS MK	order-no.	
15	8-9041-131190		8-9041-101400			drill extension	4 / 2	231	W03643156	A	15 x 9	2	8-9046-150920	
18											18 x 11	2	8-9046-181120	
20											20 x 13.5	2	8-9046-201320	
24						drill extension	4 / 3	227	W03643124	B	24 x 15.5	2	8-9046-241520	
26											26 x 17.5	3	8-9046-261730	
30	30 x 20	3	8-9046-302030											
33	33 x 22	3	8-9046-332230											
36	36 x 24	3	8-9046-362430											
40	40 x 26	3	8-9046-402630											
<b>accessories</b>		<b>SW</b>	<b>order-no.</b>	<b>accessories</b>	<b>MORSE</b>	<b>order-no.</b>	<b>accessories</b>	<b>MORSE</b>	<b>order-no.</b>					
wrench		19	7-0894-19000	drill drift 4	4	W02679004	drill drift 1	1 + 2	W02679002	A				
							drill drift 3	3	W02679003	B				

# HSS-DRILLS



drill-Ø	pull stud - A19 order-no.	tool holder order-no.	reduction sleeve, KK=with cooling duct				HSS-drill, with cooling duct					
			KK	MK	order-no.		Ø	MK	SB	order-no.		
9/16"	8-9041-131190	8-9041-101400		4 / 2	8-9041-124200	A	9/16" x 264	2	SB	8-9040-303651		
11/16"								11/16" x 282	2	SB	8-9040-304451	
13/16"								13/16" x 306	3	SB	8-9040-305251	
15/16"								15/16" x 306	3	SB	8-9040-306051	
1 1/16"					x	4 / 3	8-9041-124300	B	1 1/16" x 385	4		8-9040-306853
1 3/16"									1 3/16" x 349	4		8-9040-307651
1 5/16"									1 5/16" x 349	4		8-9040-308451
1 9/16"									1 9/16" x 349	4		8-9040-310051
6.8									6.8 x 174	1		8-9040-106850
8.0									8.0 x 181	1		8-9040-108050
8.5									8.5 x 181	1		8-9040-108550
9.0									9.0 x 188	1		8-9040-109050
10.0									10.0 x 233	2	SB	8-9040-310050
10.3									10.3 x 233	2	SB	8-9040-310350
11.0									11.0 x 242	2	SB	8-9040-311050
11.5									11.5 x 242	2	SB	8-9040-311550
12.0									12.0 x 251	2	SB	8-9040-312050
12.5									12.5 x 251	2	SB	8-9040-312550
13.0					x	4 / 2	8-9041-124200	A	13.0 x 251	2	SB	8-9040-313050
14.0							14.0 x 259	2	SB	8-9040-314050		
14.5							14.5 x 264	2	SB	8-9040-314550		
15.0							15.0 x 264	2	SB	8-9040-315050		
16.0							16.0 x 270	2	SB	8-9040-316050		
17.0							17.0 x 244	2	SB	8-9040-317050		
18.0							18.0 x 282	2	SB	8-9040-318050		
18.5							18.5 x 307	3	SB	8-9040-318550		
19.0							19.0 x 307	3	SB	8-9040-319050		
20.0							20.0 x 313	3	SB	8-9040-320050		
21.0							21.0 x 320	3	SB	8-9040-321050		
22.0							22.0 x 327	3	SB	8-9040-322050		
22.5			x	4 / 3	8-9041-124300	B	22.5 x 334	3	SB	8-9040-322550		
23.0							23.0 x 334	3	SB	8-9040-323050		
24.0							24.0 x 342	3	SB	8-9040-324050		
25.0							25.0 x 342	3	SB	8-9040-325050		
26.0							26.0 x 350	3	SB	8-9040-326050		
26.5							26.5 x 350	3	SB	8-9040-326550		
27.0							27.0 x 349	4		8-7914-270349		
28.0							28.0 x 349	4		8-7914-280349		
29.0							29.0 x 349	4		8-7914-290349		
30.0							30.0 x 349	4		8-7914-300349		
31.0							31.0 x 349	4		8-7914-310349		
32.0							32.0 x 349	4		8-7914-320349		
33.0							33.0 x 349	4		8-7914-330349		
34.0							34.0 x 349	4		8-7914-340349		
35.0							35.0 x 349	4		8-7914-350349		
36.0							36.0 x 349	4		8-7914-360349		
37.0							37.0 x 349	4		8-7914-370349		
38.0							38.0 x 349	4		8-7914-380349		
39.0							39.0 x 349	4		8-7914-390349		
40.0							40.0 x 349	4		8-7914-400349		

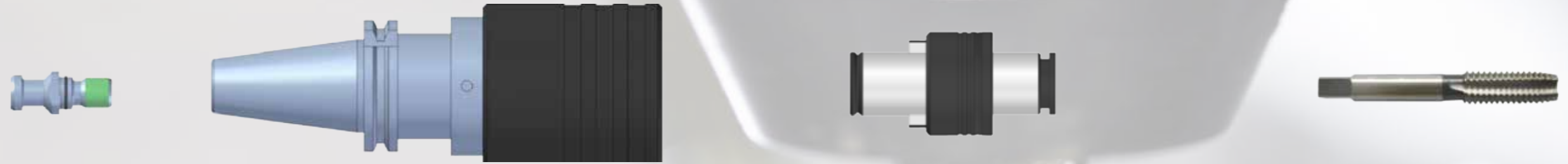
accessories	SW	order-no.
wrench	19	7-0894-19000

accessories	MORSE	order-no.
drill drift 4	4	W02679004

accessories	MORSE	order-no.
drill drift 1	1 + 2	W02679002
drill drift 3	3	W02679003

A  
B

# TAP



screw	pull stud - A19		tapping chuck				BILZ-insert			tap	
	order-no.		WFLK	A	SK	order-no.	screw	type	order-no.	screw	order-no.
M8	8-9041-131190		225	126	40	8-9041-004200	M8	WESN2B-120	8-9041-040801	M8	8-9043-080000
M10							M10	8-9041-041001	M10	8-9043-100000	
M12							M12	8-9041-041200	M12	8-9043-120000	
M14							M14	8-9041-041400	M14	8-9043-140000	
M16							M16	8-9041-041600	M16	8-9043-160000	
M18							M18	8-9041-041800	M18	8-9043-180000	
M20							M20	8-9041-042000	M20	8-9043-200000	
M22							M22	W06033444	M22	8-9043-220000	
M24			340	126	40	8-9041-004300	M24	WES3B	W06033441	M24	8-9043-240000
M27							M27	W06033442	M27	8-9043-270000	
M30							M30	W06033443	M30	8-9043-300000	

accessories	SW	order-no.
wrench	19	7-0894-19000

# MILLING CUTTER



cutter	pull stud - A19		tool holder					HSS-cutter			solid carbide cutter			roughing cutter HSS			
	order-no.		name	A	form	order-no.		Ø	HSS-PM	order-no.	Ø	KSF	order-no.	Ø	order-no.		
6.0	8-9041-131190		SK40-WD06	200	ADB	8-9041-306062	A	6.0	HSS-PM	8-9047-190060			6.0	8-9047-350060			
8.0			SK40-WD08	200	ADB	8-9041-306082						8.0	8-9047-350080				
10.0			SK40-WD10	200	ADB	8-9041-306102						10.0	8-9047-350100				
					SK 40-WD12	230	ADB	8-9041-306103		10.0	HSS-PM	8-9047-190100					
					(at Y-axis on 0)												
12.0					SK40-WD12	200	ADB	8-9041-306122	B	12.0	HSS-PM	8-9047-190120	12.0	KSF	8-9047-530120	12.0	8-9047-350120
13.5					SK40-WD12	230	ADB	8-9041-306123			13.7	HSS-PM	8-9047-190137				
14.0					(at Y-axis on 0)					14.0	HSS-PM	8-9047-190140	14.0	KSF	8-9047-530140	14.0	8-9047-350140
					SK40-WD14	200	ADB	8-9041-306142	C								
					SK40-WD12	230	ADB	8-9041-306143									
					(at Y-axis on 0)												
16.0					SK40-WD16	200	ADB	8-9041-306162	D	16.0	HSS-PM	8-9047-190160	16.0	KSF	8-9047-530160	16.0	8-9047-350160
18.0			SK40-WD12	230	ADB	8-9041-306163		18.0		HSS-PM	8-9047-190180				18.0	8-9047-350180	
			(at Y-axis on 0)														
			SK40-WD18	200	ADB	8-9041-306182	E										
			SK40-WD12	230	ADB	8-9041-306183											
			(at Y-axis on 0)														
20.0			SK40-WD20	200	ADB	8-9041-306202		20.0	HSS-PM	8-9047-190200	20.0	KSF	8-9047-530200	20.0	8-9047-350200		

accessories	SW	order-no.
wrench DIN894	19	7-0894-19000

set screw			
screw	amount	order-no.	
M8 x 10	2x	7-0916-081000	A
M10 x 12		7-0916-101200	B
M12 x 16		7-0916-121600	C
M14 x 16		7-0916-141600	D
M16 x 16	2x	7-0916-161600	E

pin spanner		
SW	order-no.	
4	7-0911-04000	A
5	7-0911-05000	B
6	7-0911-06000	C
8	7-0911-08000	D; E

# ORIGINAL KALTENBACH TOOLS: APPLY AND PRODUCE

- ▶ SAW BLADES
- ▶ SAW BANDS
- ▶ DRILL TOOLS
- ▶ CUTTING TOOLS
- ▶ CUTTING TORCHES
- ▶ SHEAR UNIT

For further information and our foreign affiliates  
please visit:

**[WWW.KALTENBACH.COM](http://WWW.KALTENBACH.COM)**

Product videos:

**[WWW.YOUTUBE.COM/KALTENBACHGROUP](http://WWW.YOUTUBE.COM/KALTENBACHGROUP)**

Follow us on LinkedIn:

**[WWW.LINKEDIN.COM/COMPANY/KALTENBACH](http://WWW.LINKEDIN.COM/COMPANY/KALTENBACH)**



**KALTENBACH GMBH + CO. KG**

Blasiring 4

D-79539 Lörrach

phone: +49 7621/175 - 0

e-Mail: [info@kaltenbach.de](mailto:info@kaltenbach.de)

[www.kaltenbach.com](http://www.kaltenbach.com)